

**Are you our House for Duty
Associate Priest for the Benefice of
Thirkleby with Kilburn and Bagby held in
plurality with Sessay and Sowerby
... in the proposed Benefice of South
Mowbray Rural Parishes,
Deanery of Mowbray**



“God’s church is called to be a body of people who live Christ’s story, active in the world, offering care, and working for justice and truth”.

Archbishop of York

Table of Contents

	Page
Welcome	2
About Us	5
Parishes in Detail	8
Vision	12
Person Specification	14
Governance	15
Housing	17

Welcome from the Bishop of Whitby



An introduction from Barry, the Bishop of Whitby

I am delighted you are exploring applying for this key House for Duty role serving the beautiful communities of Sessay, Thirkleby, Kilburn and Bagby. Be assured of my prayers and those of Archdeacon Amanda and our colleagues as you do.

This attractive role offers opportunity to minister with across four small rural communities, totalling 1,500 people, with the support of a wider team of colleagues, in the picturesque surroundings of North Yorkshire.

The congregations of Mowbray Deanery have come together over the last few years to explore what the right scaffolding is to support mission, ministry, flourishing and wellbeing. What they have proposed is far more than a pastoral reorganisation, it is a creative set of partnerships which are already bearing missional fruit. This role is a key part of that.

This is a post for a priest who enjoys working with others and is passionate about reaching beyond the walls of the church, inviting all in our communities to join in the story and know the hope and life of Jesus Christ. The team offer prayerful support, respect for boundaries so as to encourage wellbeing and opportunity to make a difference in our communities — and a wonderful new house (which is cheaper than usual to heat too!).

Sessay, Thirkleby, Kilburn and Bagby join with the parishes of the Diocese in seeking to invite the 1.5 million parishioners we serve to know the joy of Living Christ's Story. This means each church focusing on what it means to:

- Become more like Christ — knowing we are God's beloved children, that Jesus came to seek, serve and save, and actively participating in worship and witness Monday to Sunday;
- Reach people we currently don't - living and telling the story of God with cultural humility and faith-filled confidence, inviting our classmates and colleagues, neighbours and friends to know the love, purpose and hope which has blessed us;
- Grow as churches of missionary disciples which are younger and more diverse — knowing we are sent to every place and person to which we go, but being a 'community of the sent' is most effective and best reflects the Kingdom of God when everyone is known and needed, honoured and participating.

May you know the surrounding and upholding of the Spirit of God as you discern,

A handwritten signature in black ink that reads "+ Barry Whitby". The signature is written in a cursive style with a cross at the beginning.

For an informal conversation about this post, contact the Bishop of Whitby, Barry Hill (bishopofwhitby@yorkdiocese.org or 01642 593273) or the Archdeacon of Cleveland, Amanda Bloor (adcl@yorkdiocese.org or 01642 706095).

This post is open to Anglican priests who are eligible to work in the UK, subject to satisfactory episcopal reference and enhanced DBS.

Applications to Mandy Robinson, PA to the Bishop of Whitby:
mandy.robinson@yorkdiocese.org

Welcome from the Area Dean

Mowbray Deanery is one of 6 deaneries in the archdeaconry of Cleveland, Diocese of York. We are set in God's glorious Yorkshire creation, with beautiful rural villages and vibrant market towns, located in easy reach of a wide range of attractions.

We are a forward thinking deanery, currently undertaking an ambitious, grass roots, pastoral reorganisation to establish two Ministry Enabling Teams. These are building fruitful relationships, identifying creative opportunities for lay and ordained people to be working together to enable all God's people to Live Christ's Story across our diverse parishes. We are already working collaboratively through a Lay Mission + Ministry Network; Children, Family + Youth Network + Deanery Green Team to gather people of passion in these areas, aiming to catalyse Holy Spirit inspired ministry, resourcing us all. It is an exciting time to be joining the deanery!

We hope and pray that the opportunity to minister in an inspiring and supportive team will be an attractive aspect of this post. We are a 'happy Chapter', and looking forward to welcoming, worshipping and working with our new Associate Priest colleague at Bagby.

With prayers and blessings in Jesus,

Mary Rolls, Area Dean for Mowbray.



About Us

Mowbray Deanery is going through a season of change that has been discerned, discussed and consulted on over the last 5-7 years. We are reorganising our parishes to hopefully achieve sustainable ministry and better resourcing of each other.

We are seeking to appoint in the direction of travel of the pastoral reorganisation. The new proposed South Mowbray Rural Parishes will be made up of 11 parishes that have come together from three existing ministry areas, to form one new Benefice that represents our unique rural identity. This is a diverse group of parishes, with rich individual histories and a wonderful variety of worship styles. We respect and want to maintain the individuality of our parishes, whilst also sharing a common desire to grow, recognising that change is needed in the way we work.

We are seeking to appoint to two Associate Priest posts, this is one of the appointments. These will be licensed legally as Assistant Curates, but known locally as Associate Priests to honour the training and experience being offered through your ministry.

This post is currently a House-for-Duty post in the Sowerby 5 parishes benefice, supporting the Incumbent in the ministry in the villages of Bagby, Thirkleby, Kilburn + Sessay. Under the new reorganisation, both Associate Priests will be part of a clergy team of 3 for the Benefice of South Mowbray Rural Parishes; one full time Incumbent taking the legal responsibility alongside both of these Associate Priests looking after the day to day ministry. (For more on how this governance will work, see page 8). The South Mowbray Rural Parishes team is part of and supported by the wider Southern Ministry Enabling Team - 3 full time Incumbents, Curates, Self Supporting Ministers and a large retired clergy team.

The aim the reorganisation is to release more mission and ministry across our local area, and we would love for you to join us!

The formal pastoral reorganisation is not expected to be completed until mid 2025, however the existing clergy have already started working informally in the new structures.

Why Join Us:

- **Dynamic Team:** You'll be part of a dynamic and supportive team, working together to make a difference in people's lives.
- **Opportunity for Impact:** There is a chance to make a real difference as part of a new team that values innovation and creativity.
- **Breadth of Church:** We value all traditions and are committed to creating an environment where everyone feels valued and respected.
- **Learning Culture:** We approach ministry with humility, eager to learn from our context and from each other.





Parishes in Detail

Sessay and the White Horse Parishes

This group of benefices is currently connected with St Oswald's Sowerby and is known as the Five Parishes. In the rearranged structures it will be 4 parishes: Sessay, Thirkleby, Kilburn and Bagby. These parishes are all South East of Thirsk. Over the last 3 years the parishes with Sowerby have discerned the vision statement of: Love God, Build Community and Serve Locally. Each parish has also developed a mission action plan to help focus efforts. Under the proposed reorganisation, these parishes will transition from the Sowerby Incumbent to the supervision of the proposed South Mowbray Rural Parishes incumbent: Rev. Dianne Gamble. Current patterns of worship provided are outlined below. There are early stage conversations around simplifying the governance of this grouping. All four churches have open churchyards. An existing pattern of the PCCs and APCM charring being shared between Incumbant and House for Duty Priest exists for all the parishes. All four parishes share the Parish Safeguarding Officer from Sowerby.

Benefice of Sessay, St. Cuthbert's

Churchwarden and PCC Officers: Vacant. (5 PCC members) A Treasurer has been provided from Sowerby to support the parish.

Parish population = 401.

Current Services: 2 x per month (2nd Sunday Lay Led Worship, Holy Communion 10:30 4th Sunday)

Numbers (2023): Electoral Roll = 17; WC = 17; USA = 13;

Occasional Offices (2023): B = 1; W = 2; F = 2;

The parish of Sessay is made up of two villages, Sessay and Hutton Sessay, alongside associated Hamlets. The church is situated at the South-Eastern end of Sessay village, and is next door to the C of E Primary School. The schools pupils are drawn from the surrounding villages. There are good relations between the church and school. The school use the church each week for celebration worship, and the Sowerby incumbent is currently the foundation govenor. There is an 'Open the book' team that goes in every half term.

Sessay is a lively village with many community events focused around the village hall and cricket club. Church members are very engaged with the wider life of the village.

Benefice of Thirkleby with Kilburn and Bagby

Thirkleby, All Saints'

Churchwarden: Doug Gillanders, PCC Officers: Secretary and Treasurer

Parish population = 299.

Current Services: 2 x per month (2nd Sunday Holy Communion 10:30, 4th Sunday Lay Led Worship with White Horse Parishes - rotating location)

Numbers (2023): Electoral Roll = 22; WC = 14; USA = 16;

Occasional Offices (2023): B = 0; W = 1; F = 3;

All Saints' is a small but active church, with a committed PCC. All Saints' serves Great Thirkleby, Little Thirkleby and other outlying farms and hamlets. We feel an important part of our mission is to make the church welcoming and accessible to the whole community, and welcome its use by parishioners. There is Parish Hall owned by the church which has strong village support and engagement.

Kilburn, St Mary's

Churchwarden: Ali Miles PCC Officers: Secretary and Treasurer

Parish population = 297.

Current Services: 2 x per month (3rd Sunday Holy Communion 10:30, 4th Sunday Lay Led Worship with White Horse Parishes - rotating location)

Numbers (2023): Electoral Roll = 23; WC = 9; USA = 14;

Occasional Offices (2023): B = 0; W = 1; F = 2;

Sitting under the famous 'White Horse', the parish is also well known as the home of woodcarver Robert Thompson, the 'Mouseman of Kilburn'. It comprises four settlements: Kilburn, High Kilburn, Oldstead and Hambleton. Kilburn Church is always open for private prayer, and we feel this is a crucial part of its mission.

We have a small but devoted congregation and an equally dedicated PCC, who ensure the smooth running, maintenance and finances of our beautiful building.

To date the style of our worship has been traditional, as this is what most of the congregation prefer, but we aim to appeal to the wider community with a variety of less formal services, such as Harvest Festival, Mothering Sunday and a Carol Service. Alongside this we seek to part of the active community life in Kilburn

Bagby, St Mary's

Churchwarden: Amanda Dowson and Hillary Rymer PCC Officers: Secretary and Treasurer

Parish population = 556.

Current Services: 2 x per month (1st Sunday Holy Communion 10:30, 4th Sunday Lay Led Worship with White Horse Parishes - rotating location)

Numbers (2023): Electoral Roll = 21; WC = 14; USA = 16;

Occasional Offices (2023): B = 1; W = 1; F = 0;

Bagby is a village three miles from Thirsk, which has seen significant growth in the last 20 years. The parish stretches from the hamlet of Balk and across to the business parks on the edge of Thirsk.

St Mary's has a small but committed congregation, who desire to see the church grow and engage further with the community.

The PCC are currently poised to start a significant building project to install a toilet and a kitchenette into the church. This follows from the sale of the parish hall in 2021, which the PCC was no longer able to maintain.



Outdoor service at the annual Kilburn Feast

South Mowbray Rural Parishes

There is a busy and diverse life of worship and discipleship across all our churches of the new proposed Benefice of South Mowbray Rural Parishes. With regular Sunday worship, midweek services, small groups, choirs and community groups there are a lot of things going on! Here are our parishes going North to South. (For more detail on the parishes in this appointment, please see the Parish Details section). The parishes this post would have day to day oversight of are Kilburn, Bagby, Thirkleby and Sessay.



Vision - Diocese & Deanery

We share the heart and goals of our Diocesan vision, Living Christ's Story, to:

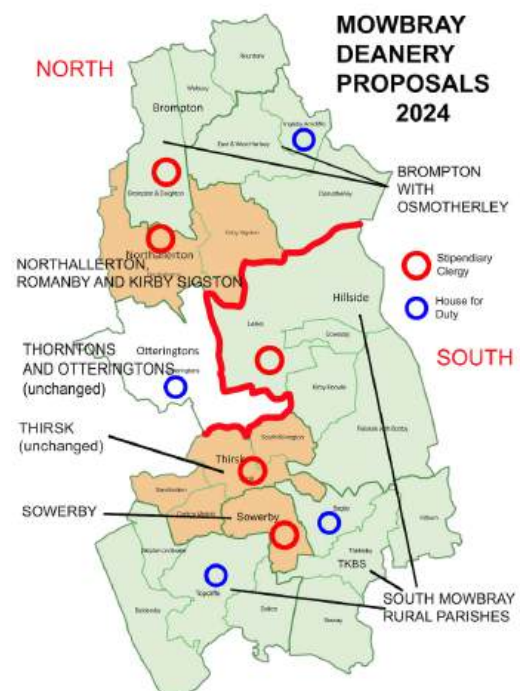
- Become more like Christ
- Reach people we currently don't
- Grow churches of missionary disciples
- Transform our finances and structures

Locally, our Deanery plan outlines how we are working together to achieve these goals. By collaborating more efficiently and effectively, we aim to help all churches flourish and remain sustainable.

To support this, we are implementing a pastoral reorganisation to transform our structures:

- Mission and ministry will be overseen by the North and South Ministry Enabling Teams.
- These teams are focused on sharing resources and workload across parish boundaries. For example, coordinating marriage preparation, sharing Advent and Lent courses, and gathering and equipping small group leaders across the area rather than by parish.
- We are also building ecumenical and community partnerships wherever possible.
- Both teams consist of stipendiary clergy and a diverse range of ordained and lay individuals, in both formal and informal positions.
- We are working towards the financial sustainability of all mission units in the Deanery and, as an area of relative affluence, aim to contribute financially to the Diocese.

The proposed reorganisation is hoped to be completed by mid-2025.



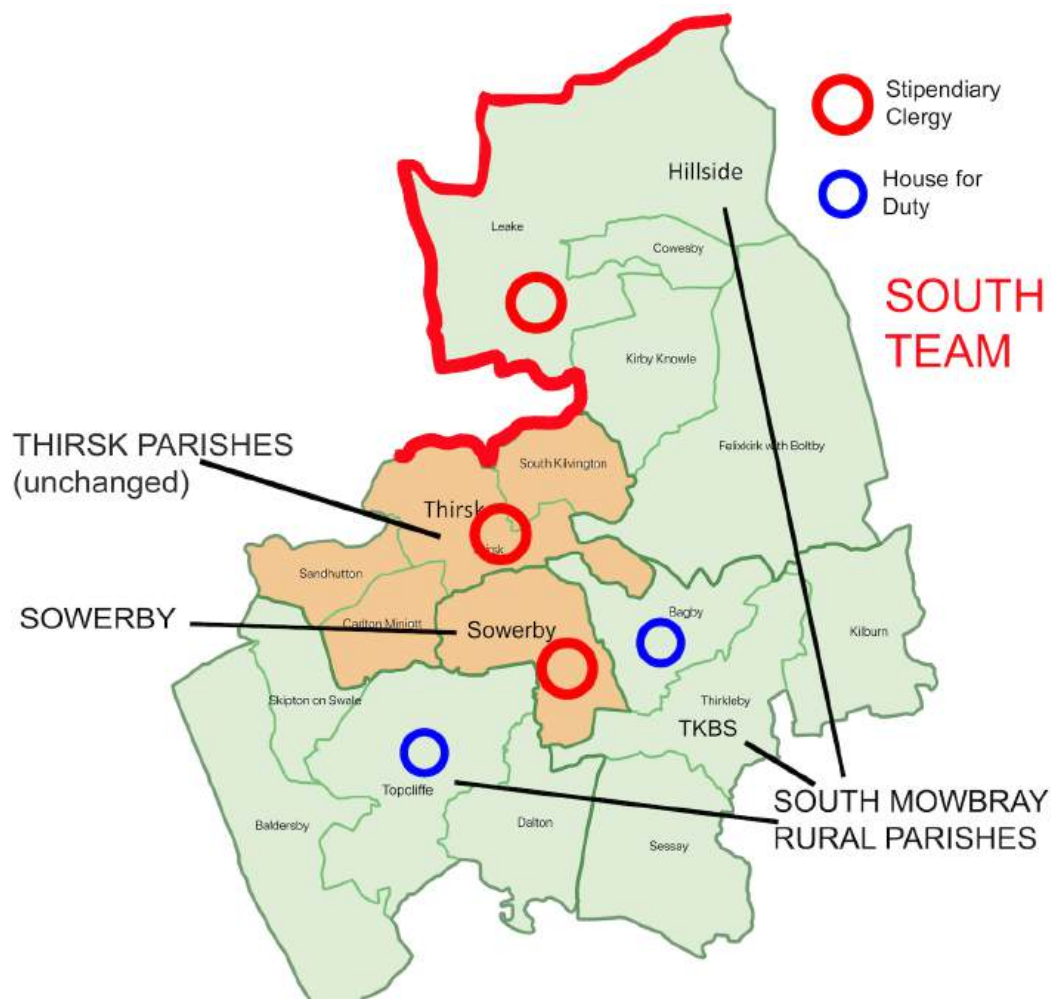
Vision - South Team

The South Team is made up of 3 full time incumbents and 2 house for duty priests as well as local lay people, licensed lay ministers and retired clergy.

The parishes are proposed to be arranged into three ministry units, the South Mowbray Rural Parishes, Sowerby Parish, and Thirsk Parishes.

Sowerby, and Thirsk Parishes will act as a central hub to support and resource mission + ministry in the team. One example of this support is the Children, Youth and Families Minister based out of Sowerby.

The Southern Clergy team meets together regularly, to support and pray for each other and share upcoming opportunities. The Southern Ministry Enabling team holds the strategic direction of travel.



Person Specification

Person Qualities

- **Team Player:** We are seeking a real team player who is deeply aligned with the vision and mission of our deanery, and able to bring energy and enthusiasm to the table.
- **Missional Passion:** We desire someone with a passion for mission and outreach to help reach the 97% of our communities who do not currently engage with church.
- **Enthusiasm:** We are looking for someone who brings energy and vitality to their ministry, inspiring those around them with their passion.

What We Offer

- **Supportive Team:** With our new team structure there is plenty of support, and we actively look for opportunities for improving our team working.
- **Respect for Boundaries:** Your well-being is important to us, and we will respect the boundaries you need to maintain a healthy work-life balance.
- **Opportunity for Focal Ministry:** You will hold oversight for pastoral care and leadership responsibilities within one of three geographic areas, supported by Southern deanery team. Alongside this the incumbent will hold any legal responsibilities.

Gifts and Skills Desired

- **Collaborative Spirit:** We value collaboration and are seeking a leader who can work effectively with our local team ministers, both lay and ordained.
- **Engagement in Lay Ministry:** You should have a passion for engaging and empowering lay ministry within our communities.
- **Distinct Rural Ministry:** Understanding and appreciation of the unique challenges and opportunities of rural ministry is highly desirable.
- **Empowering Leadership:** We are looking for someone with a heart for equipping God's people to serve and thrive in their ministries.
- **Setting Gods People Free:** We seek a candidate who is passionate about setting God's people free from whatever hinders their flourishing and spiritual growth.

This role comes with expectation that a House for Duty role, is worked as Sundays and two other days during the week.

Governance

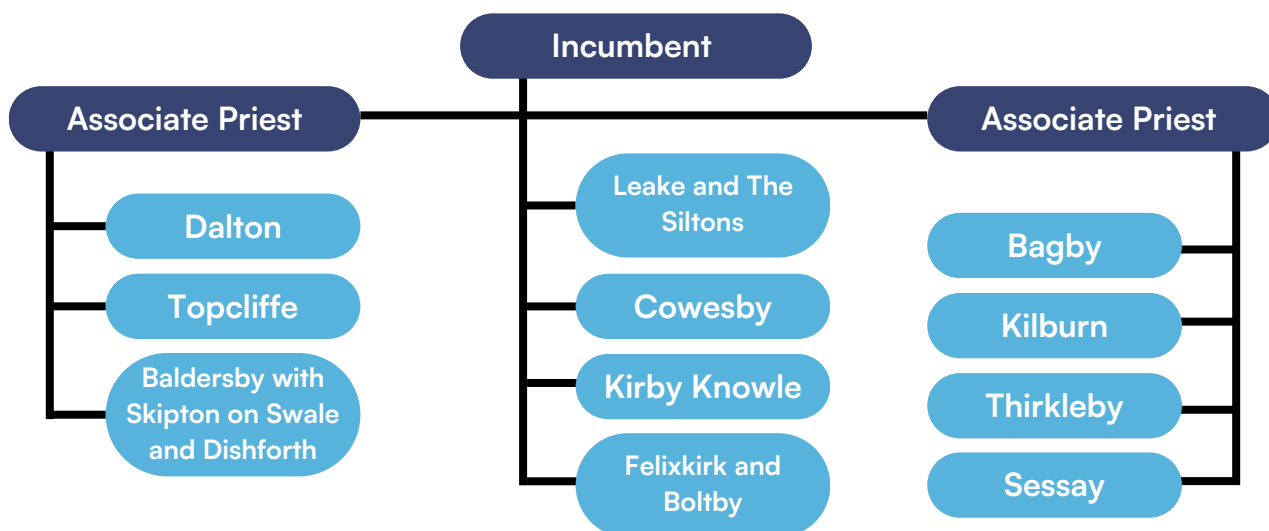
We believe that clear and accountable leadership is vitally important for the Church. This diagram below lays out how we envisage leadership responsibility will be divided out. While the Incumbent and Associate Priests will share in the day-to-day responsibilities of the parishes, each focusing on the churches in their area, the Incumbent will hold the legal responsibilities.

The Associate Priest will be the go-to local clergy contact; leading their PCCs, seeking God's guidance for the mission of each parish, undertaking or facilitating occasional offices, supported by the Incumbent. The Associate Priest will have good support in establishing an achievable pattern of service cover, from both the Incumbent and retired priests who have built good relationships with the parishes during the vacancy. An advantage of team working is the ability to cross cover for annual leave, we also have a large number of retired active PTO clergy ready to help.

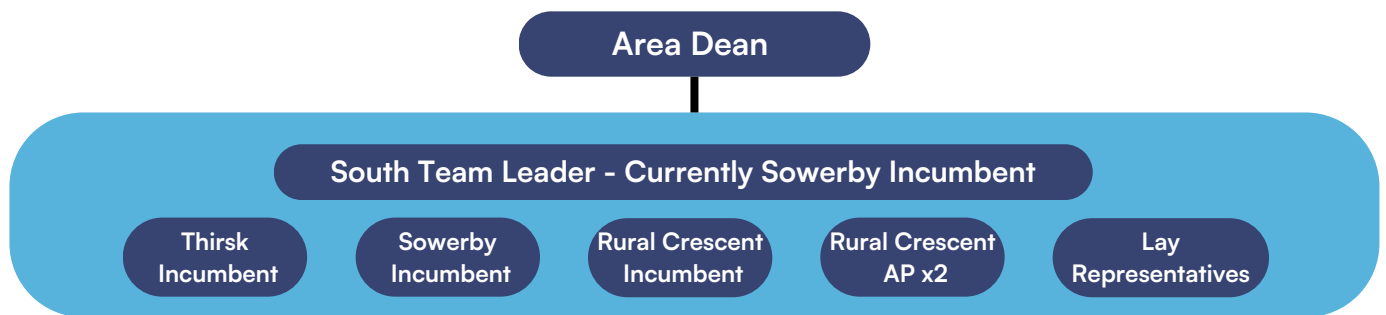
The PCCs of Thirkleby, Kilburn, Bagby and Sessay, currently have 3 Joint PCC meetings a year and hold 3 individual PCC meetings including APCMs. It is expected that the Associate Priest would share in chairing APCM with the incumbent.

Existing Day to Day Relationships of SMRP

The existing relationships are mapped out below, we expect relationships and day to day responsibility to shift and develop as the new team is established.



South Team Structure



**Kilburn
Feast
outdoor
service**

**Church Family
Walk pausing at
Bagby**



Housing

Housing provision for this post is in the attractive and vibrant village of Bagby. The vicarage has recently been purchased for this post, is a new build property to a high specification, and EPC B rating. It provides modern and spacious living, with 4 bedrooms. It also comes with a allotment plot. It is situated in the heart of the village, close to the Church and the pub. Bagby has excellent road access, being just off the A19 and only 3miles from the market town of Thirsk.

Bagby Vicarage

